

Spotswood College

Te Kura Tuarua o Ngāmotu

2027 Prospectus




SPOTSWOOD COLLEGE
TE KURA TUARUA O NGĀMOTU

Our Vision

Ka Hono - *We Connect*

Ka Whaikaha - *We Strengthen and*

Ka Whakamanawa tātou i tātou - *We Inspire each other*



Principal's Welcome

Tēnā koutou katoa,
Ko Tokomaru te waka
Ko Taranaki te maunga
Ko Herekawe te awa
Ko Te Ātiawa te iwi
Ko Ngāti Te Whiti te hapū
Ko Te Kura Tuarua o Ngāmotu

Welcome to Spotswood College



At Spotswood College, we believe every young person deserves to be known, valued, challenged and supported to succeed.

Our vision is simple: to create confident, connected and future-focused learners who are equipped to thrive in a rapidly changing world while remaining grounded in strong relationships, identity and community.

Located beneath the shadow of Taranaki Mouna and proudly connected to Te Ātiawa, our school reflects the rich diversity of the communities we serve. We are committed to creating an inclusive environment where every student feels a sense of belonging and where difference is celebrated as a strength.

Learning at Spotswood College is engaging, relevant and purposeful. Whether students aspire to university, apprenticeships, trades, entrepreneurship, creative industries or employment, they are supported to discover their strengths and pursue pathways that are meaningful to them. What makes our kura special is the way we balance achievement with wellbeing.

Guided by our values of

- Manaakitanga – Caring for others and our environment
- Pono – Honesty and integrity
- Whakamana – Striving for excellence and lifting others up
- Whanaungatanga – Building positive relationships and belonging

We foster a culture where students are encouraged to take risks, develop leadership, contribute to their community and achieve personal excellence.

Our dedicated staff work alongside students and whānau to ensure that every learner is challenged, supported and inspired. Through innovative learning opportunities, cultural engagement, sporting excellence, performing arts, leadership programmes and community partnerships, our students are prepared not only for success at school, but for life beyond it.

I invite you to discover what makes Spotswood College such a special place. We are proud of our students, proud of our community, and excited about the future we are creating together.

Ngā mihi,
Nicola Ngarewa, MEd
Principal

Why choose Spotswood College?

At Spotswood College, excellence is intentional - built through strong teaching, supported by care, and achieved by every learner.



At Spotswood College, students are more than a number. We take pride in knowing our learners, building meaningful relationships and creating opportunities for every young person to flourish.

Our students learn in an environment where academic success, wellbeing, culture, leadership and personal growth are equally valued.

Why Families Choose Spotswood College

Strong Relationships

Guided by our Pou values of

- Manaakitanga – Caring for others and our environment
- Pono – Honesty and integrity
- Whakamana – Striving for excellence and lifting others up
- Whanaungatanga – Building positive relationships and belonging

We create a culture where students feel safe, respected and connected.

Pathways for Every Learner

Whether students are aiming for university, vocational training, apprenticeships, employment or entrepreneurship, we provide flexible pathways that support individual aspirations and success.

Excellence Through Opportunity

Students have access to a wide range of opportunities across academic, sporting, cultural, artistic and leadership areas. We believe success looks different for every learner and celebrate achievement in all its forms.

Connected to Community

Our strong partnerships with whānau, iwi, businesses, tertiary providers and community organisations help students build authentic connections and gain real-world experiences.

Inclusive and Diverse

We are proud of the diversity within our school community. Every student is welcomed, supported and encouraged to bring their whole self to school.

Future-Focused Learning

Our programmes develop critical thinking, creativity, collaboration and confidence, preparing students for a world that is constantly evolving.

At Spotswood College, students are:

- ✓ Known and valued as individuals
- ✓ Supported to achieve personal excellence
- ✓ Connected to culture, community and identity
- ✓ Prepared for a range of future pathways
- ✓ Encouraged to lead, contribute and make a difference

Knowing and Supporting Every Learner

At Spotswood College, every student is known, supported, and challenged to succeed.



At the centre of this is our Learning Advisory (LA) programme. Every student is part of a Learning Advisory group, where a dedicated staff member works closely with them over time. This relationship is key – ensuring each student is understood as a learner and as a person.

Through Learning Advisory, students are supported to:

- Monitor their progress and achievement
- Set goals and identify next steps
- Build effective learning habits
- Receive regular mentoring and academic guidance
- Strengthen connections between school and whānau

This consistent, personalised support ensures students remain focused, supported, and on track to achieve at a high level.

Alongside Learning Advisory, every student belongs to a Hapū. Hapū provide a strong sense of identity and belonging within the school, connecting students across year levels and creating a supportive community. Through Hapū, students build relationships, strengthen school culture, and develop a sense of pride and connection to the kura.

Students are further supported through a connected and proactive pastoral and wellbeing network, ensuring support is timely, coordinated, and focused on positive outcomes.

This includes:

- Pōutiaki (Deans) – overseeing wellbeing, engagement, and progress
- Manaaki – wellbeing support, including access to guidance services
- Public Health Nurse (PHN) and external agencies where required
- Careers and Gateway – supporting pathway planning and future opportunities

Together, these structures ensure that every student is both supported and extended – building the confidence, resilience, and capability needed to achieve strong outcomes and succeed beyond school.



Academic Focus and Support

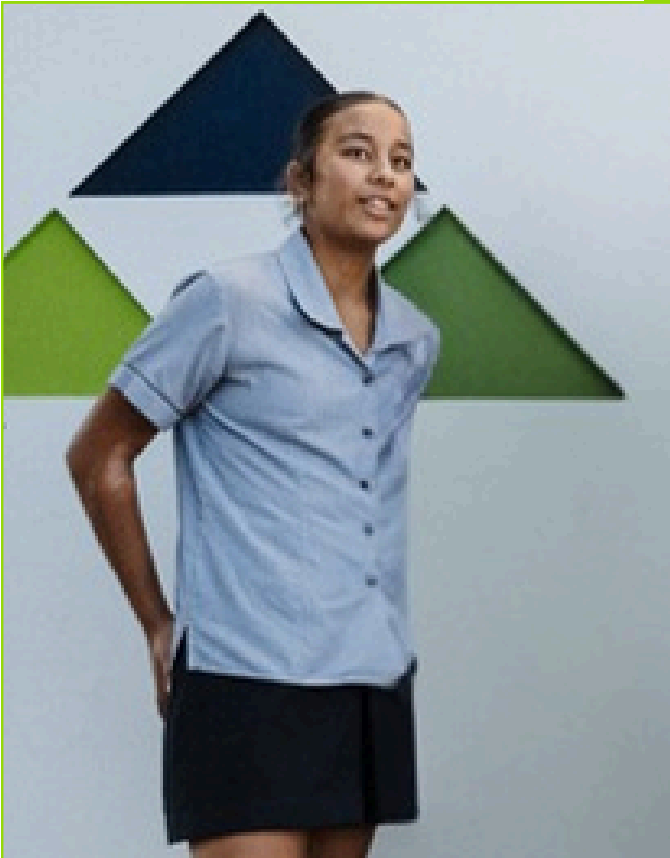
"You're pushed to do your best, but you're supported the whole way."

When I started at Spotswood College what I noticed straight away was how much the teachers care about helping you improve.

In class, things are explained clearly, and there's always support if you need it. The expectations are high, but it doesn't feel overwhelming because you're given the tools to succeed. You're encouraged to ask questions, take risks, and keep improving. I've been able to achieve more than I expected, especially in subjects like English and Maths.

The feedback we get helps you understand what to do next, not just what you got wrong. Spotswood has helped me realise that I'm capable of more than I thought — and that's made a big difference to my confidence.

Luke Benton – Year 9



Belonging and Culture

"You feel like you belong here."

What stands out to me about Spotswood College is the sense of belonging. It's a place where you can be yourself and feel accepted.

There are lots of different cultures and backgrounds, and that's something that's really valued. You see it in the way people treat each other and in what we learn in class.

Our teachers take the time to get to know us, and that makes a big difference.

The school values — like Manaakitanga and Whanaungatanga — aren't just talked about, they're actually lived every day. You feel supported, whether it's from your friends, teachers, or the wider school.

For me, Spotswood isn't just a place to learn — it's a place where I feel connected.

Anjali Bhaskar – Year 9



Opportunities and Pathways

“There are so many different pathways — you can find what works for you.”

One of the best things about Spotswood College is the range of opportunities. You’re not pushed into one path — you can explore what interests you.

I’ve been able to take subjects that match what I want to do in the future, and there are also opportunities like Gateway, work experience, and leadership roles. These have helped me understand what I’m interested in and what I’m good at.

Teachers also help you think about what comes next — whether that’s university, trades, or something else. You’re supported to make decisions about your future.

Spotswood has helped me feel prepared and confident about what I want to do after school.

Millie Stonier - Year 12



Co-Ed and Real-World Readiness

“Learning in a co-ed school prepares you for the real world.”

I think being at a co-educational school like Spotswood College is really important. You learn how to work with different people, respect different perspectives, and communicate well.

In classes and group work, you’re working alongside everyone, and that helps build confidence and social skills. It feels natural, like the real world — not separate or restricted. You also see strong leadership from all students across the school, which is really positive.

Spotswood has helped me grow not just academically, but as a person. I feel more confident working with others and stepping into new situations.

Adrian MacFarlane - Year 12

A Curriculum Designed for Every Learner

At Spotswood College, we believe every learner deserves a pathway that challenges, supports, and inspires them to succeed. Our curriculum is designed to provide strong academic foundations while creating opportunities for students to explore their interests, discover their strengths, and prepare for a successful future. Learning is purposeful, engaging, and connected to the real world.

As students progress through the school, they are offered increasing choice and flexibility, allowing them to personalise their learning and pursue pathways aligned with their goals and aspirations. Guided by our values of:

Manaakitanga – Care and Respect

Pono – Integrity and Honesty

Whakamana – Empowerment and Growth and

Whanaungatanga – Relationships and Belonging), we create learning environments where students are encouraged to achieve excellence while remaining connected to their culture, community, and identity.

Junior School Years 9 and 10

The junior years provide the foundation for future success. During Years 9 and 10, students build strong knowledge and skills while exploring a wide range of learning opportunities that help them discover their interests, passions, and strengths. Students develop capability across core learning areas including:

- English
- Mathematics
- Science
- Social Sciences
- Health and Physical Education

Alongside these foundations, students access a broad range of electives that allow them to explore the arts, technology, health and physical education, languages, and other specialist learning areas.

A key feature of the Spotswood experience is our Learning Advisory programme. Every student belongs to a Learning Advisory class where they are supported by a dedicated teacher who works alongside them to monitor progress, set goals, build positive relationships, and strengthen connections with whānau.

Students benefit from:

- Strong foundations in literacy, numeracy and critical thinking
- A broad range of curriculum and co-curricular opportunities
- Personalised support through Learning Advisory
- Extension opportunities for students seeking additional challenge
- High expectations alongside strong pastoral care
- Clear pathways into senior school, tertiary study, training, and employment

Every student is supported to develop the knowledge, skills, confidence, and resilience needed to thrive in a rapidly changing world.



Students benefit from:

- A broad and balanced curriculum that supports both achievement and wellbeing
- Opportunities to explore new subjects and discover future pathways
- A structured learning environment that promotes confidence and success
- Personalised support through Learning Advisory
- Extension opportunities through the Koru Programme for students requiring additional challenge
- Strong relationships with teachers who know, support, and encourage each learner
- Opportunities to develop leadership, confidence, and resilience

By the end of Year 10, students have developed the knowledge, confidence, and self-belief needed to make informed decisions about their future learning and transition successfully into senior school pathways.



Senior School Years 11 to 13

In the senior school, students begin to specialise in areas that align with their goals and interests. Students work towards NCEA qualifications, with a strong focus on achievement, progress, and future pathways.

We provide:

- Clear and supported course pathways
- Guidance to achieve NCEA at all levels
- Opportunities for Merit, Excellence, and Scholarship
- Ongoing monitoring of progress and targeted support

Students are supported to make informed choices and to work towards pathways beyond school, including university, trades, or employment.

Pathways Beyond School

At Spotswood College, students are supported to plan for their future with confidence and clarity. Pathways include:

- University and degree programmes
- Trades and industry training
- Workplace learning experiences
- Tertiary partnerships – Attend WITT and school in a carefully designed dual enrolment programme. Achieve your NCEA levels while fast tracking your tertiary qualifications.

Students leave with strong qualifications, clear direction, and the confidence to take their next step.



Vocational Pathways:

Gateway

Gateway opens a new pathway to the world of work through work experience placements. Students are allowed the opportunity to blend school study with meaningful workplace learning and experience. You will have the opportunity to build links with Industry Training Organisations, modern apprenticeships and workplaces.

STAR

These courses are taster style classes that help students to explore career and pathway options.

They assist students in making informed decisions about future subjects, study and employment goals. These courses are funded and available to senior students.

3+2 WITT

Students on these courses will study at school three days per week and WITT two days.

They will often complete a National Certificate within their chosen field of study. In Term 4 you will return to school to concentrate on external exams and further career development. These courses are funded.

Trades Academy

Trades Academy is a partnership between Taranaki secondary schools, WITT and various industry partners.

Trades Academy offers a practical and hands on adult learning environment using industry standard equipment and technology. Students study one day a week at WITT.

Koru Programme

Nurturing potential, inspiring excellence and growing future leaders.

The Koru Programme is Spotswood College's extension and enrichment programme for students who demonstrate high levels of academic potential, curiosity, creativity, and motivation to learn. Inspired by the unfolding koru, the programme recognises that talent and potential continue to grow when students are challenged, supported, and provided with opportunities to extend beyond the classroom.



Through the Koru Programme, students engage in deeper learning, critical thinking, problem-solving, leadership development, and enrichment opportunities designed to nurture excellence while maintaining balance and wellbeing.

What Makes the Koru Programme Different?

Koru students are encouraged to:

- Think critically and creatively
- Explore ideas beyond the curriculum
- Pursue academic excellence
- Develop leadership capabilities
- Engage with real-world challenges and opportunities
- Build confidence, resilience, and independence as learners

The programme creates opportunities for students to learn alongside like-minded peers while being challenged to reach their personal best.

Opportunities for Koru Students

Students may participate in:

- Extension learning projects
- Academic competitions and challenges
- Guest speakers and specialist workshops
- Leadership and mentoring opportunities
- University and tertiary engagement programmes
- Cultural, scientific, technological, and entrepreneurial experiences
- Scholarship and advanced learning opportunities

Where appropriate, students may also access accelerated pathways, extension classes, or personalised learning opportunities within curriculum areas.

A Connected Approach

Each Koru student belongs to a dedicated Koru Advisory class where they receive mentoring, goal-setting support, and opportunities to reflect on their learning journey. The programme is supported through strong partnerships between students, whānau, teachers, Learning Advisory teachers and school leaders to ensure learners are both challenged and supported.

Who Is the Koru Programme For?

The Koru Programme is designed for students who demonstrate:

- High academic potential
- Strong curiosity and enthusiasm for learning
- Creativity and innovative thinking
- Motivation and commitment
- Leadership potential
- A willingness to embrace challenge

Selection considers a range of information, including achievement data, teacher recommendations, previous learning experiences, student voice, and whānau input.

Our Goal

The Koru Programme aims to ensure that every learner with high potential is inspired, challenged, and supported to flourish. At Spotswood College, excellence is not simply about achievement — it is about developing capable, confident young people who are ready to make a positive difference in the world.

Choosing Your Courses

Selecting your courses is an exciting opportunity to shape your learning programme around your interests, strengths, and future goals. As you make your choices, think about the subjects you enjoy and look forward to, the areas where you achieve success, and the activities you are involved in outside of school.

You may also want to consider courses you would like to continue studying in future years, as some pathways build on the skills and knowledge developed in earlier courses. Ask yourself questions such as:

- What subjects do I enjoy most?
- What am I good at?
- What skills would I like to develop?
- What careers or pathways interest me?
- What activities, hobbies, or interests do I have outside school?
- What subjects might I want to study in Years 10, 11, 12, and 13?

Remember, there are no perfect choices. The most important thing is to select courses that interest and challenge you, while keeping future opportunities open. If you are unsure, talk with your whānau, teachers, dean, or careers staff, who can help you make informed decisions about your learning journey.

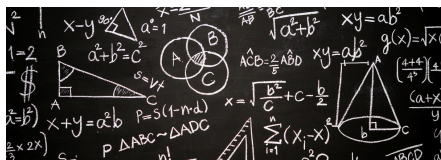
Year 9 – Course Selection			
Full Year Compulsory Courses			
English	Mathematics	Science	Social Sciences
Half Year Compulsory Courses			
Health and Physical Education			
Technology – Option One: Students pick ONE course from these half year courses			
Wood Technology	Metal Technology	Food Technology	Textiles and Design
Digital Media	Spatial and Product Design (DVC)	Robotics	Computer Science
The Arts – Option Two: Students pick ONE course from these half year courses			
Art	Music	Drama	Te Ao Haka
Electives – Students pick THREE courses from these half year courses (Students cannot select the same course that was selected in Option 1 or 2)			
Te Reo Māori	Spanish	Japanese	French
Sports Education	Outdoor Education	Agriculture	Origins of Theatre
Music	Psychology – Brainwaves and Behaviour	Crime, Law and Justice	Horticulture
Art	Drawing, Printmaking and Painting	Ceramics and Sculpture	Wood Technology
Metal Technology	Textiles and Design	Digital Media	Spatial and Product Design (DVC)
Robotics	Computer Science	Instrumental Art	Vocal Art
Polynesian Drama Studies	Kapa Haka (full day course)		

Compulsory Full Year Courses



English

Students will develop their reading, writing, speaking, listening, and viewing skills through the study of a wide range of literary, visual, and digital texts. They will explore novels, short stories, poetry, film, and media while learning to analyse language, ideas, and themes from both New Zealand and global perspectives. Students will communicate for a variety of audiences and purposes through creative writing, formal writing, discussions, and presentations. They will learn to think critically, express themselves with confidence, and engage with the perspectives of others. Year 9 English builds strong literacy skills and fosters a lifelong appreciation of language and communication.



Mathematics

Students will develop confidence and competence across the key areas of number, algebra, geometry, measurement, statistics, and probability. They will learn to apply mathematical thinking to solve real-world problems, identify patterns and relationships, and communicate their reasoning using appropriate mathematical language. Through a variety of practical investigations, collaborative tasks, and problem-solving activities, students will strengthen their understanding of mathematical concepts and processes. They will be encouraged to think critically, reason logically, and analyse information effectively. Year 9 Mathematics provides a strong foundation for future learning while helping students develop the skills needed to make informed decisions in everyday life.



Science

Students will explore the fundamental concepts of the natural world through the study of biology, chemistry, physics, and earth and space science. They will develop scientific knowledge and practical skills by carrying out investigations, conducting experiments, analysing evidence, and drawing conclusions based on their findings. Through hands-on learning experiences and inquiry-based activities, students will learn how science helps us understand and explain the world around us. They will be encouraged to ask questions, think critically, solve problems, and make connections between scientific concepts and everyday life. Year 9 Science provides a strong foundation for future scientific learning and discovery.



Social Sciences

Students will develop an understanding of societies, cultures, and how people interact with each other and their environments. Through the study of Social Sciences, they will explore topics from History, Geography, Civics and Society, and Economic Activity, including changes in New Zealand over time, government and democracy, migration, coastal environments, urban challenges, financial decision-making, and the global economy. Through inquiry, discussion, and critical thinking, students will build the knowledge and skills needed to participate actively and responsibly in an increasingly interconnected world.

Compulsory Half Year Course



Health and Physical Education

Students will develop the knowledge, skills, and confidence needed to thrive physically, mentally, emotionally, and socially. Through Health Education, they will explore topics such as identity, relationships, personal safety, emotions, and making positive health choices. In Physical Education, students will develop movement skills, fitness, teamwork, and tactical thinking through a variety of physical activities, games, outdoor education experiences, and aquatic safety. Through active participation and practical learning, students will build confidence, resilience, and the skills needed to lead healthy and active lives.

Technology – Option One: Students pick ONE course from these half year courses



Wood Technology

Students will design and build their own wood projects, learning how to safely use tools, select materials, and create strong, well-crafted products. Through hands-on making, they'll develop practical workshop skills, solve design challenges, and bring their ideas to life.



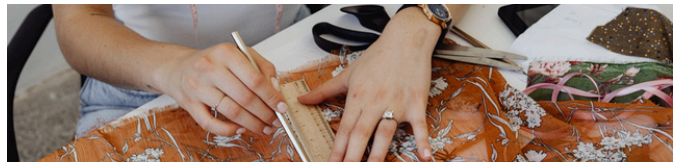
Metal Technology

Students will design and engineer projects using a range of metals, developing practical workshop skills and learning how to safely use tools and equipment. Through hands-on making, testing, and refining their ideas, they'll apply engineering thinking to solve real design challenges and create strong, fit-for-purpose products.



Food Technology

Students will build confidence in the kitchen through fun, hands-on cooking experiences. They'll learn food preparation skills, nutrition, biotechnology, and safe kitchen practices while creating a range of tasty dishes. Through planning, making, and evaluating their food products, students will consider the influence of culture and the environment on food choices while developing creativity, independence, and practical life skills.



Textiles and Design

Students will explore fashion and product design through hands-on projects using a range of soft materials and modern technologies. They'll develop practical making skills, test and refine creative ideas, and learn how sustainability, ethics, and purposeful design influence the products we use every day. Along the way, they'll gain confidence working independently, collaborating with others, and turning ideas into high-quality finished products.



Digital Media

Students will explore how digital media is created, designed, and shared using industry-standard tools and techniques. They'll create digital outcomes such as animations, websites, graphics, and interactive content while learning how design elements such as colour, layout, typography, and accessibility shape user experiences. Students will develop valuable creative and digital skills while gaining the confidence to design engaging media for real-world audiences and purposes.



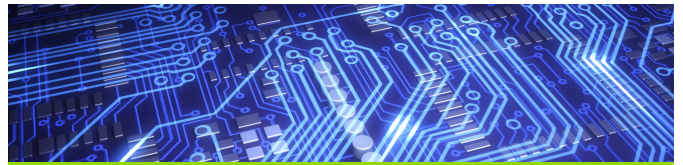
Spatial and Product Design (DVC)

Students will explore product design and architecture, learning how great ideas become real-world solutions. They'll develop creative thinking, sketching, technical drawing, and CAD skills while designing and modelling their own concepts. Through hands-on projects, students will experiment with materials, form, and user experience while developing the skills to communicate and refine innovative design ideas.



Robotics

Students will learn how robots are designed, built, and programmed by using VEX IQ kits to explore how different parts work together. They will learn how the robot's structure, gears, sensors, and motors all play a role in how it moves and reacts. Students will build and code their own robots, using sensors and simple automation to help the robot make decisions and complete tasks. By experimenting with different components and testing their ideas, students will create reliable robots that are designed for the vex robotics game. Students may choose to participate in the robotics tournaments as an extra curricular activity.



Computer Science

Students will learn computer science by designing and coding their own games, developing problem-solving, computational thinking, and debugging skills. They will also investigate how AI works, how intelligent systems make decisions, and the opportunities and challenges of AI, including issues such as bias and misinformation. Through creating, testing, and improving digital projects, students will build confidence as creative and capable digital innovators.

The Arts – Option Two: Students pick ONE course from these half year courses



Art

Students will explore ideas and imagination through visual art. They will experiment with different materials and techniques, develop creative skills, and improve their own artworks. Students will also learn how artists communicate meaning and respond to the artistic choices of others.



Music

Students will explore music through playing instruments, creating music, and discovering how musical ideas and technology shape the music we hear. They will explore a range of musical traditions, styles, and technologies from New Zealand and around the world.



Drama

Students will engage in theatre learning delivered through traditional, Eurocentric foundational theatre practices, including the study of script work, devising, and the use of theatre technology where appropriate. They will participate in group work, physical theatre performance, reflective and critical writing, and creative processes that draw on their imagination and personal ideas. Students will develop confidence in performance, collaboration, and communication while gaining an understanding of how theatre is created, interpreted, and presented to an audience.



Te Ao Haka

Students will engage in Te Ao Haka as a culturally responsive performing arts course that provides opportunities to explore Māori culture, language, identity, and traditional practices through haka and performance. They will learn the foundations of Te Ao Haka while developing an understanding of how the art form continues to grow and evolve in contemporary contexts. Through performance, collaboration, and reflection, students will strengthen their confidence, cultural understanding, and connection to te ao Māori while developing skills in expression, rhythm, and teamwork.

Electives – Students pick THREE courses from these half year courses

Students cannot select the same course that was selected in Option 1 or 2



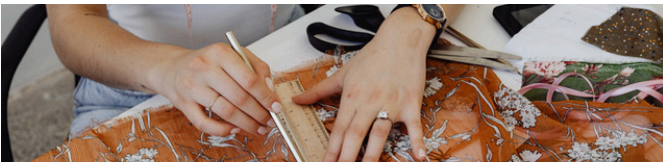
Wood Technology

Students will design and build their own wood projects, learning how to safely use tools, select materials, and create strong, well-crafted products. Through hands-on making, they'll develop practical workshop skills, solve design challenges, and bring their ideas to life.



Metal Technology

Students will design and engineer projects using a range of metals, developing practical workshop skills and learning how to safely use tools and equipment. Through hands-on making, testing, and refining their ideas, they'll apply engineering thinking to solve real design challenges and create strong, fit-for-purpose products.



Textiles and Design

Students will explore fashion and product design through hands-on projects using a range of soft materials and modern technologies. They'll develop practical making skills, test and refine creative ideas, and learn how sustainability, ethics, and purposeful design influence the products we use every day. Along the way, they'll gain confidence working independently, collaborating with others, and turning ideas into high-quality finished products.



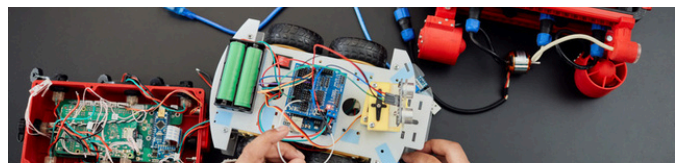
Spatial and Product Design (DVC)

Students will explore product design and architecture, learning how great ideas become real-world solutions. They'll develop creative thinking, sketching, technical drawing, and CAD skills while designing and modelling their own concepts. Through hands-on projects, students will experiment with materials, form, and user experience while developing the skills to communicate and refine innovative design ideas.



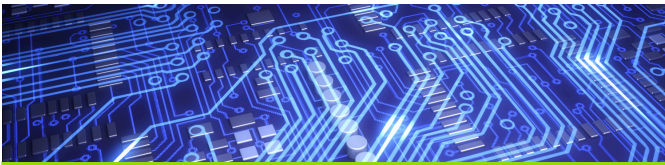
Digital Media

Students will explore how digital media is created, designed, and shared using industry-standard tools and techniques. They'll create digital outcomes such as animations, websites, graphics, and interactive content while learning how design elements such as colour, layout, typography, and accessibility shape user experiences. Students will develop valuable creative and digital skills while gaining the confidence to design engaging media for real-world audiences and purposes.



Robotics

Students will learn how robots are designed, built, and programmed by using VEX IQ kits to explore how different parts work together. They will learn how the robot's structure, gears, sensors, and motors all play a role in how it moves and reacts. Students will build and code their own robots, using sensors and simple automation to help the robot make decisions and complete tasks. By experimenting with different components and testing their ideas, students will create reliable robots that are designed for a clear purpose and real challenges.



Computer Science

Students will learn computer science by designing and coding their own games, developing problem-solving, computational thinking, and debugging skills. They will also investigate how AI works, how intelligent systems make decisions, and the opportunities and challenges of AI, including issues such as bias and misinformation. Through creating, testing, and improving digital projects, students will build confidence as creative and capable digital innovators.



Te Reo Māori

Hutia te rito o te rito o te harakeke, whakatairangahia rere ki uta, rere ki tai, ki mai ki ahai, he aha te mea nui o te ao, maku e ki atu, he tangata, he tangata, he tangata.

Tauira will learn basic te reo Māori, tauira will be equipped with language to immerse themselves in tikanga Māori, ngā whakapono Māori mō te ao Māori. It will enable tauira to converse and communicate within their own cultural communities, and across different cultures. It fosters intellectual understanding and appreciation for diverse worldviews.



French

Students will have an introduction to the French language and the cultures of the French-speaking world. They will develop the ability to communicate in simple French in everyday, familiar situations, building foundational skills in listening, speaking, reading, and writing. Learning focuses on practical communication through engaging topics such as greetings, farewells, personal information, family and pets, classroom life, weather and seasons and food. Students will learn to understand and use basic vocabulary and sentence structures to interact with others and express simple ideas. The course also introduces students to aspects of French-speaking cultures through a range of authentic and engaging resources, helping to develop curiosity, cultural awareness, and an appreciation of global diversity.



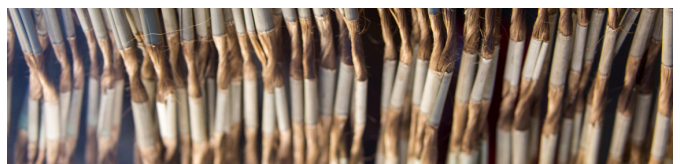
Japanese

Students will have an introduction to the Japanese language and the cultures of the Japanese-speaking world. They will develop the ability to communicate in simple Japanese in everyday, familiar situations, building foundational skills in listening, speaking, reading, and writing. Learning focuses on practical communication through engaging topics such as greetings, personal information, classroom life, hobbies, leisure activities and Japanese festivals throughout the year. Students will learn to understand and use basic vocabulary and sentence structures to interact with others and express simple ideas. The course also introduces students to aspects of Japanese-speaking cultures through a range of authentic and engaging resources, helping to develop curiosity, cultural awareness, and an appreciation of global diversity.



Spanish

Students will be introduced to the Spanish language and the cultures of the Spanish-speaking world. They will develop foundational skills in listening, speaking, reading, and writing through practical communication in everyday situations. Learning will focus on topics such as greetings, introductions, family, school life, weather, and food, using basic vocabulary and simple sentence structures to share information and express ideas. Through interactive activities and regular language practice, students will build confidence in using Spanish while developing cultural awareness and an appreciation of the diverse traditions and perspectives found across the Spanish-speaking world.



Full day Course - Kapa Haka

Students will participate in Kapa Haka through a tuakana-teina model, where more experienced students support and guide others in their learning. Students are expected to commit to attending Kapa Haka for the full day each Friday and to actively contribute to the group. Throughout the course, they will develop knowledge and skills in mōteatea, waiata-ā-ringa, poi, haka, and karakia, while gaining a deeper understanding of te reo Māori, tikanga, and Māori culture. Students will build confidence, discipline, teamwork, and leadership skills, and will have opportunities to perform at school and community events. A high level of commitment, pride, and dedication is expected as students work together to achieve excellence in performance.



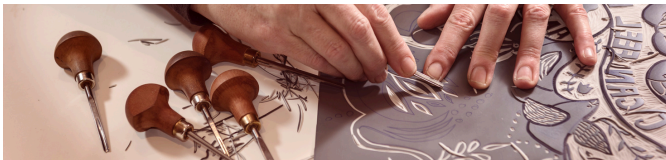
Art

Students will explore ideas and imagination through visual art. They will experiment with different materials and techniques, develop creative skills, and improve their own artworks. Students will also learn how artists communicate meaning and respond to the artistic choices of others.



Ceramics and Sculpture

Students will bring their ideas to life in 3D through ceramics and sculpture. They will work with clay and a range of other materials to create artworks inspired by stories, characters, animals, creatures, and their own imagination. Students will experiment with different techniques while exploring their creativity.



Drawing, Printmaking, and Painting

Students will use drawing to create either prints or paintings of their own choice. They will experiment with different techniques and materials while exploring creativity, imagination, and visual art.



Music

Students will explore music through playing instruments, creating music, and discovering how musical ideas and technology shape the music we hear. They will explore a range of musical traditions, styles, and technologies from New Zealand and around the world.



Instrumental Art

Students will develop their skills, confidence, and stage presence through music-making. They will strengthen their instrumental technique on their chosen instrument and build the ability to perform with accuracy, expression, and control. Students will create engaging solo and group performances across a range of musical styles, developing their understanding of rhythm, melody, harmony, and musical interpretation. They will also refine their rehearsal habits, listening skills, and ensemble awareness while working collaboratively with others. Through regular performance opportunities and feedback, students will grow as confident musicians who can communicate effectively through their instrument and connect meaningfully with audiences.



Vocal Art

Students will build confidence, creativity, and musicianship through the power of voice. They will develop healthy vocal technique, explore harmony singing, and work collaboratively across a range of musical styles. Students will strengthen their listening skills, pitch accuracy, and musical expression while learning how to blend effectively within a group. Through regular performance opportunities, they will develop stage confidence and an understanding of how vocal music is used to communicate emotion and meaning. Students will also grow as reflective musicians, improving their technique and performance through feedback and practice.



Crime, Law and Justice

Students will explore the causes and consequences of crime and gain an understanding of the criminal justice system in New Zealand. They will examine New Zealand crime statistics and case studies to develop insight into how and why crime occurs and is managed. Students will also investigate the concept of justice, including cases of wrongful conviction and issues of inequality within the justice system. Through this learning, they will develop critical thinking skills and a deeper awareness of how justice is applied in society and the factors that can influence fair and unfair outcomes.



Psychology – Brainwaves and Behaviour

Students will explore psychology as the study of the human mind and behaviour, gaining an understanding of why people think, feel, say, and do the things they do. They will engage in discussions, reading, and writing activities that explore a range of psychological concepts and fields. Students will examine case studies, including well-known individuals with psychological disorders, as well as behaviours such as lying, addiction, and aggression. Through this learning, they will develop insight into human behaviour and the factors that influence it. Students will also build valuable lifelong skills in critical thinking, empathy, and understanding others.



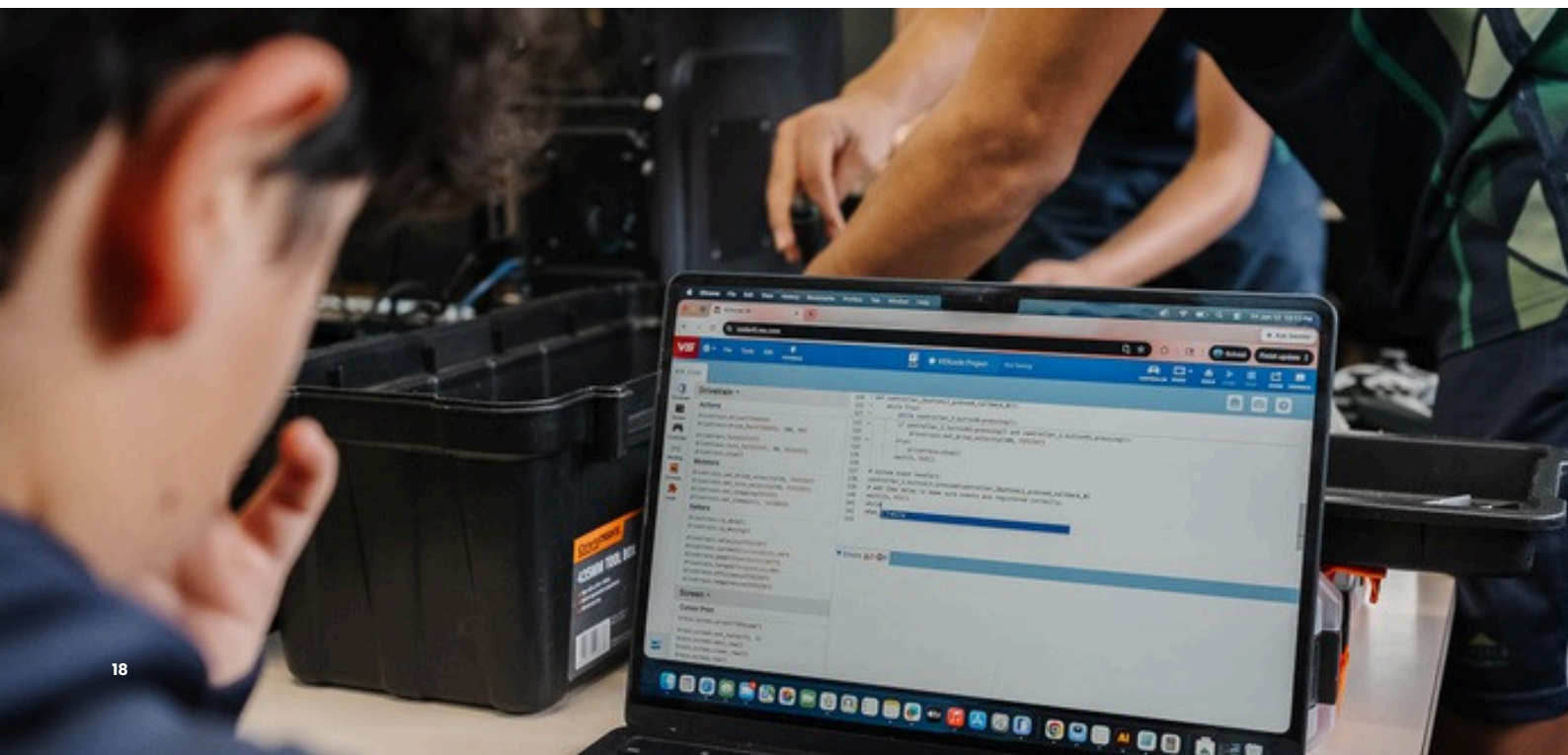
Polynesian Drama Studies

Students will engage in theatre learning delivered through a Māori and Pasifika lens, exploring scripts, themes, and issues that reflect how and why Aotearoa has developed into the society it is today. They will examine the social, historical, and economic influences that have shaped the cultural uniqueness of our whenua/fanua. Students will participate in group work, physical theatre performance, reflective and critical writing, and creative processes that draw on their imagination and personal ideas. Through this learning, they will develop confidence in performance, collaboration, and communication while deepening their understanding of identity, culture, and storytelling in Aotearoa.



Origins of Theatre

Students will engage in theatre learning delivered through traditional, Eurocentric foundational theatre practices, including the study of script work, devising, and the use of theatre technology where appropriate. They will participate in group work, physical theatre performance, reflective and critical writing, and creative processes that draw on their imagination and personal ideas. Students will develop confidence in performance, collaboration, and communication while gaining an understanding of how theatre is created, interpreted, and presented to an audience.





Sports Education

Students will focus on movement skills and principles in sport, developing their understanding of locomotor, non-locomotor, and object control skills, along with game structures and tactical thinking. They will explore training methods to improve sport-specific fitness components and learn how psychological preparation can enhance performance and support injury prevention. Students will also study nutrition to optimise performance and recovery, as well as engage in fitness testing and the development of personal exercise plans. Through practical and theory-based learning, they will build confidence, resilience, and a deeper understanding of how to improve and maintain physical performance.



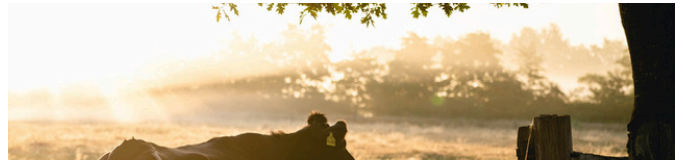
Outdoor Education

Students will engage in outdoor education experiences that develop their understanding of safety, leadership, teamwork, and environmental awareness in a range of outdoor settings. They will participate in practical activities such as tramping, navigation, camping skills, and water-based experiences where appropriate, learning how to plan, prepare, and respond effectively in outdoor environments. Students will develop knowledge of risk management, decision-making, and survival skills while building confidence, resilience, and independence. They will also explore their connection to the natural environment and learn how to care for and respect it. Through hands-on experiences, students will strengthen their physical capabilities and personal growth.



Horticulture

Students will be introduced to the skills necessary to grow and maintain a productive vegetable garden. They will learn how to prepare soil, sow seeds, care for plants, and manage growth through to maturity in the school garden. Students will gain practical experience in planting, watering, weeding, and harvesting, while developing an understanding of seasonal planting cycles and basic horticultural practices. They will also explore the importance of sustainability, healthy food production, and caring for the environment. Through hands-on learning, students will build confidence, responsibility, and an appreciation for where food comes from and how it is grown.



Agriculture

Students will experience a range of techniques used by farmers to grow and produce food, including monitoring animal health, shearing, drenching, fencing, planting, and the use of farm equipment. They will develop practical knowledge of how these processes contribute to successful food production in New Zealand. Students will also explore the geographical distribution of farming systems and gain an understanding of the factors that help different crops and livestock flourish. Through this learning, they will build awareness of New Zealand's farming success and the skills, knowledge, and practices required to sustain productive agricultural systems.



Spotswood College Sport



Sport at Spotswood College is an important part of student life, offering opportunities for participation, connection, and personal development in a supportive and inclusive environment.

Spotswood College Sport, where applicable, caters to a wide range of interests and abilities, ensuring all students can have the opportunity to get involved. Sport contributes to a balanced lifestyle, supporting not only physical wellbeing but also the development of confidence, resilience, and social connections.

Historically known for its Volleyball programme, Spotswood College Sport also has a diverse range of teams entering regular local competitions for our traditional summer and winter sports codes.

Select teams will also enter in National Competitions during the New Zealand Secondary School Sport Summer, Winter and Junior Tournament Weeks. These are the largest national sporting events each year, seeing up to 50,000 students competing against one another all around the country.

In addition, Spotswood College is a part of the Taranaki Secondary School Sports Association (TSSSA) which hosts up to 35 events around the province, promoting participation and opportunity through a variety of sports. These include some of our traditional sports such as Tennis and Netball, to modified and recreational sports such as 3x3 Basketball and 5-a-Side Football.

Spotswood College Sport works in partnership with our neighbouring schools, local clubs and our Regional Sporting Organisations (RSO's), to ensure we can provide a platform for all young people wanting to participate in organised and recreational sports.

Overall, sport at Spotswood College is accessible, flexible, and designed to enhance the student experience, whether through skill development, social participation, or simply the enjoyment of being active

Clubs and Co-Curricular Opportunities

A wide range of clubs and groups are available throughout the year, catering to diverse interests including academic, cultural, creative, and social activities.

Overall, the co-curricular programme at Spotswood College is flexible, inclusive, and designed to enhance the student experience, allowing students to try new activities, meet others, and make the most of their time both inside and outside the classroom.



- Poly Club
- Kapa Haka



- School Production
- Debating



- Robotics
- Chess Club



- Volleyball
- Badminton

Opportunities beyond the classroom

At Spotswood College, learning extends well beyond the classroom. Students are encouraged to get involved, challenge themselves, and develop their strengths across a wide range of opportunities.

Participation supports the development of confidence, leadership, teamwork, and a strong sense of belonging.

Students are encouraged to participate fully, challenge themselves, and make the most of the opportunities available.



Students can engage in:

Sport

A wide range of sporting opportunities are available to support both participation and achievement. Students are encouraged to represent the school, set goals and develop resilience and discipline.

Arts and Culture

Through kapa haka, performing arts and visual arts, students can develop creativity, confidence and cultural identity through performance and expression.

Leadership and Service

Students are given the opportunity to take on leadership roles, contribute to school life, and support others. Students develop initiative, responsibility, and a sense of service.

Community Involvement

Students engage with the wider community through a range of events and experiences that foster confidence, responsibility and the development of real-world skills.

E-Learning, BYOD and Stationery

At Spotswood College, e-learning is an important part of teaching and learning, helping students engage, collaborate, and access learning both in and beyond the classroom. Digital technology is integrated across the curriculum, and students are supported to become safe, responsible digital citizens.

Spotswood College is a BYOD (Bring Your Own Device) school. Students are encouraged to bring their own device, while the school also provides high-specification technology for specialist subjects such as Digital Technology, Design, Music, Media, and the Arts.

BYOD Minimum Requirements

Devices should have:

- Minimum 10" screen
- Robust protective case or carry bag
- 4GB RAM and dual-core processor
- Minimum 5-hour battery life

Some subjects, including Digital Technology, photography, animation, and certain art and design courses, may require more specialised devices. Guidance can be provided where needed.

Additional Stationery Requirements

Students will also need:

- Pens and pencils
- Ruler
- Eraser and sharpener
- Lined refill
- Scientific calculator
- Earbuds/earphones for laptop use

Uniform

At Spotswood College, all students are required to wear the school uniform, with the exception of Year 13 students who are permitted to wear non-uniform clothing. Year 13 students are still expected to dress appropriately, with clothing that is neat, respectful and suitable for a school environment.

Spotswood College students are expected to take pride in their uniform and wear it correctly at all times, including appropriate footwear.

Items such as jeans, cargo pants, and ripped clothing are not permitted. Footwear must be suitable for school activities and learning programmes.




Enrolment – Join Spotswood College

At Spotswood College, we combine high expectations with strong foundations to ensure every student has the opportunity to succeed and thrive.

We welcome students and whānau who value a structured, purposeful learning environment and a strong focus on achievement.

Enrolment Information

 (06) 751 2416

 admin@spotswoodcollege.school.nz
 www.spotswoodcollege.school.nz

Girls' Uniform Options



Formal Blouse
\$65.00

Formal Skirt
\$75.00



Merino Jersey
\$95.00

Formal Skirt
\$75.00



Merino Jersey
\$95.00

Formal Trousers
\$85.00



Hoodie
\$70.00

Trackpants
\$75.00



Unisex Softshell Jacket
\$110.00

Trackpants
\$75.00



PE Set Shorts and Top
\$75.00

Boys' Uniform Options



Formal Shirt
\$65.00

Formal Shorts
\$75.00



Merino Jersey
\$95.00

Formal Shorts
\$75.00



Merino Jersey
\$95.00

Formal Trousers
\$85.00



Hoodie
\$70.00

Trackpants
\$75.00



Unisex Softshell Jacket
\$110.00

Trackpants
\$75.00



PE Set Shorts and Top
\$75.00



SPOTSWOOD COLLEGE
TE KURA TUARUA O NGĀMOTU

129 South Road | New Plymouth 4310
P. (06) 751 2416
www.spotswoodcollege.school.nz
E. admin@spotswoodcollege.school.nz